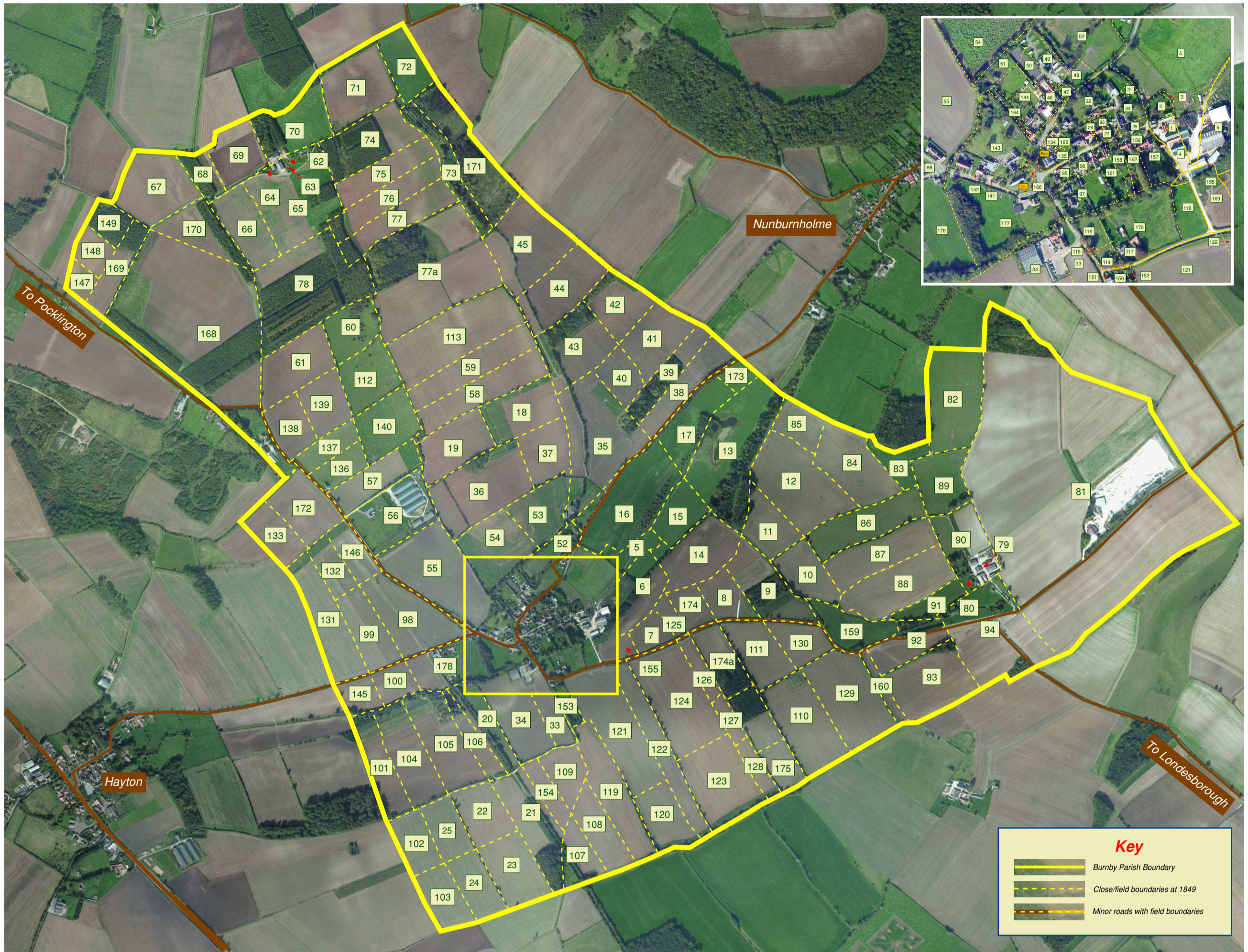


# Burnby 1849 Tithes Apportionment



## Burnby Tithes Apportionment 1849

Abbreviations: "Ac" Acres : "Ro" Roods : "Pe" Perches (40 perches per rood : 4 roods per acre)

Close	Landowner	Occupier	Ac	Ro	Pe	Close	Landowner	Occupier	Ac	Ro	Pe	Close	Landowner	Occupier	Ac	Ro	Pe
1/H	Sir Charles Henry John Anderson Bt.	George & James Scott	0	1	5	62	Sir Charles Henry John Anderson Bt.	Robert James				122	Sir Charles Henry John Anderson Bt.	George & James Scott	12	2	31
2/G	Sir Charles Henry John Anderson Bt.	George & James Scott	0	1	23	63	Sir Charles Henry John Anderson Bt.	Robert James				123	Sir Charles Henry John Anderson Bt.	George & James Scott	17	3	25
3/P	Sir Charles Henry John Anderson Bt.	George & James Scott	0	0	15	64	Sir Charles Henry John Anderson Bt.	Robert James				124	Sir Charles Henry John Anderson Bt.	George & James Scott	17	0	27
4/S	Sir Charles Henry John Anderson Bt.	George & James Scott	0	2	39	65	Sir Charles Henry John Anderson Bt.	Robert James				125	Sir Charles Henry John Anderson Bt.	George & James Scott	2	3	6
5	Sir Charles Henry John Anderson Bt.	George & James Scott	12	1	21	66	Sir Charles Henry John Anderson Bt.	Robert James				126	Sir Charles Henry John Anderson Bt.	George & James Scott	3	1	2
6	Sir Charles Henry John Anderson Bt.	George & James Scott	6	3	32	67	Sir Charles Henry John Anderson Bt.	Robert James				127	Sir Charles Henry John Anderson Bt.	George & James Scott	3	0	20
7	Sir Charles Henry John Anderson Bt.	George & James Scott	5	0	7	68	Sir Charles Henry John Anderson Bt.	Robert James				128	Sir Charles Henry John Anderson Bt.	George & James Scott	3	3	37
8	Sir Charles Henry John Anderson Bt.	George & James Scott	7	2	12	69	Sir Charles Henry John Anderson Bt.	Robert James				129	Sir Charles Henry John Anderson Bt.	George & James Scott	18	3	35
9	Sir Charles Henry John Anderson Bt.	George & James Scott	13	3	15	70	Sir Charles Henry John Anderson Bt.	Robert James				130	Sir Charles Henry John Anderson Bt.	George & James Scott	7	0	34
10	Sir Charles Henry John Anderson Bt.	George & James Scott	8	2	1	71	Sir Charles Henry John Anderson Bt.	Robert James				131	Sir Charles Henry John Anderson Bt.	George & James Scott	8	3	18
11	Sir Charles Henry John Anderson Bt.	George & James Scott	10	2	31	72	Sir Charles Henry John Anderson Bt.	Robert James				132	Sir Charles Henry John Anderson Bt.	George & James Scott	6	1	5
12	Sir Charles Henry John Anderson Bt.	George & James Scott	19	3	13	73	Sir Charles Henry John Anderson Bt.	Robert James				133	Sir Charles Henry John Anderson Bt.	George & James Scott	4	3	29
13	Sir Charles Henry John Anderson Bt.	George & James Scott	20	2	26	74	Sir Charles Henry John Anderson Bt.	Robert James				134/H	Sir Charles Henry John Anderson Bt.	William Easton	0	0	24
14	Sir Charles Henry John Anderson Bt.	George & James Scott	9	2	33	75	Sir Charles Henry John Anderson Bt.	Robert James				135/G	Sir Charles Henry John Anderson Bt.	William Easton	0	0	14
15	Sir Charles Henry John Anderson Bt.	George & James Scott	7	3	19	76	Sir Charles Henry John Anderson Bt.	Robert James				136	Sir Charles Henry John Anderson Bt.	William Easton	4	3	15
16	Sir Charles Henry John Anderson Bt.	George & James Scott	26	1	3	77	Sir Charles Henry John Anderson Bt.	Robert James				137	Sir Charles Henry John Anderson Bt.	William Easton	5	1	14
17	Sir Charles Henry John Anderson Bt.	George & James Scott	14	0	34	77a	Sir Charles Henry John Anderson Bt.	William Trueman & others	40	1	38	138	Sir Charles Henry John Anderson Bt.	William Easton	5	3	38
18	Sir Charles Henry John Anderson Bt.	John Smith	11	2	38	78	Sir Charles Henry John Anderson Bt.	Robert James				139	Sir Charles Henry John Anderson Bt.	William Easton	8	0	30
19	Sir Charles Henry John Anderson Bt.	John Smith	12	0	2	79/H	Sir Charles Henry John Anderson Bt.	Charles Stocks & Alice Holtby	0	0	38	140	Sir Charles Henry John Anderson Bt.	William Easton	10	2	1
20						80/O	Sir Charles Henry John Anderson Bt.	Charles Stocks & Alice Holtby	0	1	23	141/H	Sir Charles Henry John Anderson Bt.	Henry Stubbs	0	0	19
21						81	Sir Charles Henry John Anderson Bt.	Charles Stocks & Alice Holtby	174	3	10	142/G	Sir Charles Henry John Anderson Bt.	Henry Stubbs	0	0	10
22	Rev. Charles Carr Rector of Barmby	Richard Wilkinson	47	0	32	82	Sir Charles Henry John Anderson Bt.	Charles Stocks & Alice Holtby	19	0	1	143	Sir Charles Henry John Anderson Bt.	Henry Stubbs	2	2	31
23						83	Sir Charles Henry John Anderson Bt.	Charles Stocks & Alice Holtby	4	0	27	144	Sir Charles Henry John Anderson Bt.	Henry Stubbs	1	2	15
24						84	Sir Charles Henry John Anderson Bt.	Charles Stocks & Alice Holtby	15	2	7	145	Sir Charles Henry John Anderson Bt.	Henry Stubbs	2	1	31
25						85	Sir Charles Henry John Anderson Bt.	Charles Stocks & Alice Holtby	6	3	13	146	Sir Charles Henry John Anderson Bt.	Henry Stubbs	3	1	33
26/H	Sir Charles Henry John Anderson Bt.	Isaac Wilkinson	0	1	6	86	Sir Charles Henry John Anderson Bt.	Charles Stocks & Alice Holtby	13	2	17	147	Sir Charles Henry John Anderson Bt.	Henry Stubbs	3	2	20
27	Sir Charles Henry John Anderson Bt.	Isaac Wilkinson	0	0	32	87	Sir Charles Henry John Anderson Bt.	Charles Stocks & Alice Holtby	12	3	23	148	Sir Charles Henry John Anderson Bt.	Henry Stubbs	5	1	17
28/S	Sir Charles Henry John Anderson Bt.	Isaac Wilkinson	0	0	10	88	Sir Charles Henry John Anderson Bt.	Charles Stocks & Alice Holtby	15	1	20	149	Sir Charles Henry John Anderson Bt.	Henry Stubbs	5	1	32
29/G	Sir Charles Henry John Anderson Bt.	Isaac Wilkinson	0	0	23	89	Sir Charles Henry John Anderson Bt.	Charles Stocks & Alice Holtby	10	0	25	150/H	Sir Charles Henry John Anderson Bt.	Widow Wright	0	0	8
30/O	Sir Charles Henry John Anderson Bt.	Isaac Wilkinson	0	1	24	90	Sir Charles Henry John Anderson Bt.	Charles Stocks & Alice Holtby	11	1	17	151/G	Sir Charles Henry John Anderson Bt.	Widow Wright	0	0	4
31/G	Sir Charles Henry John Anderson Bt.	Isaac Wilkinson	0	0	20	91	Sir Charles Henry John Anderson Bt.	Charles Stocks & Alice Holtby	4	2	17	152/O	Sir Charles Henry John Anderson Bt.	Widow Wright	0	0	11
32	Sir Charles Henry John Anderson Bt.	Isaac Wilkinson	2	0	6	92	Sir Charles Henry John Anderson Bt.	Charles Stocks & Alice Holtby	8	3	21	153	Sir Charles Henry John Anderson Bt.	Widow Wright	1	2	38
33	Sir Charles Henry John Anderson Bt.	Isaac Wilkinson	4	1	1	93	Sir Charles Henry John Anderson Bt.	Charles Stocks & Alice Holtby	15	2	5	154	Sir Charles Henry John Anderson Bt.	Widow Wright	3	3	7
34	Sir Charles Henry John Anderson Bt.	Isaac Wilkinson	15	0	15	94	Sir Charles Henry John Anderson Bt.	Charles Stocks & Alice Holtby	25	3	22	155	Sir Charles Henry John Anderson Bt.	Widow Wright	1	2	24
35	Sir Charles Henry John Anderson Bt.	Isaac Wilkinson	23	0	9	95/H	Sir Charles Henry John Anderson Bt.	John Smith	0	1	14	156/H&G	Sir Charles Henry John Anderson Bt.	James Parker	0	0	23
36	Sir Charles Henry John Anderson Bt.	Isaac Wilkinson	18	0	36	96/G	Sir Charles Henry John Anderson Bt.	John Smith	0	1	18	157	Sir Charles Henry John Anderson Bt.	James Parker	1	0	27
37	Sir Charles Henry John Anderson Bt.	Isaac Wilkinson	7	3	20	97/O&S	Sir Charles Henry John Anderson Bt.	John Smith	1	1	24	158/O	Sir Charles Henry John Anderson Bt.	James Parker	0	1	26
38	Sir Charles Henry John Anderson Bt.	Isaac Wilkinson	12	1	32	98	Sir Charles Henry John Anderson Bt.	John Smith	21	3	5	159	Sir Charles Henry John Anderson Bt.	James Parker	8	0	27
39	Sir Charles Henry John Anderson Bt.	Isaac Wilkinson	7	2	16	99	Sir Charles Henry John Anderson Bt.	John Smith	9	2	6	160	Sir Charles Henry John Anderson Bt.	James Parker	2	1	19
40	Sir Charles Henry John Anderson Bt.	Isaac Wilkinson	6	2	2	100	Sir Charles Henry John Anderson Bt.	John Smith	4	0	21	161/H&O	Sir Charles Henry John Anderson Bt.	Wm Dickinson & Wm Trueman	0	2	29
41	Sir Charles Henry John Anderson Bt.	Isaac Wilkinson	9	3	17	101	Sir Charles Henry John Anderson Bt.	John Smith	9	3	21	162/O	Sir Charles Henry John Anderson Bt.	Wm Dickinson & Wm Trueman	0	2	5
42	Sir Charles Henry John Anderson Bt.	Isaac Wilkinson	12	0	16	102	Sir Charles Henry John Anderson Bt.	John Smith	7	3	25	163	Sir Charles Henry John Anderson Bt.	Wm Dickinson & Wm Trueman	1	2	16
43	Sir Charles Henry John Anderson Bt.	Isaac Wilkinson	15	1	6	103	Sir Charles Henry John Anderson Bt.	John Smith	8	1	23	164/H&G	Sir Charles Henry John Anderson Bt.	Robert Adamson	0	0	31
44	Sir Charles Henry John Anderson Bt.	Isaac Wilkinson	16	3	27	104	Sir Charles Henry John Anderson Bt.	John Smith	11	3	39	165/H&G	Sir Charles Henry John Anderson Bt.	William Easton	0	0	18
45	Sir Charles Henry John Anderson Bt.	Isaac Wilkinson	16	1	38	105	Sir Charles Henry John Anderson Bt.	John Smith	14	1	28	166/G	Sir Charles Henry John Anderson Bt.	Anthony Robinson	0	0	14
46/H	Sir Charles Henry John Anderson Bt.	Robert Wilkinson	0	1	2	106	Sir Charles Henry John Anderson Bt.	John Smith	3	3	6	167	Sir Charles Henry John Anderson Bt.	Anthony Robinson	0	0	5
47/G	Sir Charles Henry John Anderson Bt.	Robert Wilkinson	0	0	12	107	Sir Charles Henry John Anderson Bt.	John Smith	3	3	1	168	Sir Charles Henry John Anderson Bt.	John Smith & others	70	3	29
48	Sir Charles Henry John Anderson Bt.	Robert Wilkinson	0	2	6	108	Sir Charles Henry John Anderson Bt.	John Smith	9	0	28	169	Sir Charles Henry John Anderson Bt.	Himself			
49/O	Sir Charles Henry John Anderson Bt.	Robert Wilkinson	0	2	20	109	Sir Charles Henry John Anderson Bt.	John Smith	8	3	2	170	Sir Charles Henry John Anderson Bt.	Himself			
50/S	Sir Charles Henry John Anderson Bt.	Robert Wilkinson	0	0	27	110	Sir Charles Henry John Anderson Bt.	John Smith	16	0	9	171	Sir Charles Henry John Anderson Bt.	Himself			
51	Sir Charles Henry John Anderson Bt.	Robert Wilkinson	0	3	16	111	Sir Charles Henry John Anderson Bt.	John Smith	9	2	34	172	Sir Charles Henry John Anderson Bt.	William Trueman & others	11	3	20
52	Sir Charles Henry John Anderson Bt.	Robert Wilkinson	5	2	32	112	Sir Charles Henry John Anderson Bt.	John Smith				173	Simeon Templeman	Himself	2	3	20
53	Sir Charles Henry John Anderson Bt.	Robert Wilkinson	8	2	30	113	Sir Charles Henry John Anderson Bt.	John Smith				174	Simeon Templeman	Himself	16	2	27
54	Sir Charles Henry John Anderson Bt.	Robert Wilkinson	12	2	22	114/H	Sir Charles Henry John Anderson Bt.	Matthew Smith	0	1	12	174a	Simeon Templeman	Himself			
55	Sir Charles Henry John Anderson Bt.	Robert Wilkinson	21	1	2	115/G	Sir Charles Henry John Anderson Bt.	Matthew Smith	0	0	7		Trustees & Governors (Note 2)	Matthew Harrison	8	0	15
56	Sir Charles Henry John Anderson Bt.	Robert Wilkinson	14	0	20	116/O	Sir Charles Henry John Anderson Bt.	Anthony Robson	0	2	18	176	Simeon Templeman	Himself	2	3	16
57	Sir Charles Henry John Anderson Bt.	Robert Wilkinson	9	3	1	117/S	Sir Charles Henry John Anderson Bt.	Anthony Robson	0	0	2	177	Rev. John Ponsoby	Miss Ponsoby	4	1	29
58	Sir Charles Henry John Anderson Bt.	Robert Wilkinson	12	1	4	118	Sir Charles Henry John Anderson Bt.	George & James Scott	0	3	32	178	York & North Midland Railway Co.	Themselves	22	1	10
59	Sir Charles Henry John Anderson Bt.	Robert Wilkinson	10	3	24	119	Sir Charles Henry John Anderson Bt.	George & James Scott	12	2	27	178a	York & North Midland Railway Co.	Themselves	1	3	37
60	Sir Charles Henry John Anderson Bt.	Robert Wilkinson	9	1	15	120	Sir Charles Henry John Anderson Bt.	George & James Scott	10	1	2						
61	Sir Charles Henry John Anderson Bt.	Robert Wilkinson	13	2	18	121	Sir Charles Henry John Anderson Bt.	George & James Scott	17	2	7						

Note 1 The suffix letters on '1/H' etc indicate whether these small closes are a Garden, a Homestead, a House & Garden, a Plantation, an Orchard and/or a Stack Garth.

Note 2 (Close 175) Trustees & Governors of the Tancred Charity of Whitley